

Quick Fit™ Custom Design Wall Plate

Giving the Custom Home Theater installer flexibility of interchangeable parts on the job. These wall plates are molded with 3/8" (.375") holes and 7/16" (.437") hex nut cut outs on the front plate to hold Philmore solderless connectors in place. Color is white.

NEW
1 HOLE



No. 75-4111

NEW
2 -LE



No. 75-,112

NEW
3 HOLE



No. 75-4113

NEW
4 HOLE



No. 75-4114

NEW
6 HOLE



No. 75-4116

NEW
8 HOLE



No. 75-4118

Also Available in Designer Style inserts in Our Master Catalog

1 HOLE



No. 75-4011

2 HOLE



No. 75-4012

3 HOLE



No. 75-4013

4 HOLE



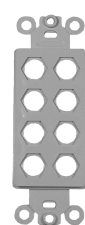
No. 75-4014

6 HOLE



No. 75-4016

8 HOLE



No. 75-4008

Dual Flush Mount Wall Plate With ADSL Filter

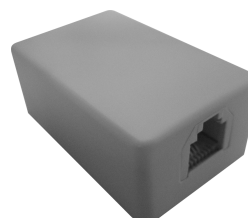
4 Conductor jacks, one jack for a regular phone line and second jack has a built - in DSL line filter. The ADSL filter jack will prevent interference to your telephone. Color is white.

No. 75-215



Mini Surface Mount Telephone Jacks

A real space saver for surface mounting telephone jacks. The Philmore mini jack is almost half the size of standard surface mount jacks. Mounting screws and 2 way adhesive foam tape are included. Color is Ivory and is UL listed.



1.25" W x 1.97" L



No. 75-265
4 Conductor

No. 75-6265
6 Conductor

Mini Modular Extension Coupler

4 Conductor Female modular jacks at either end allowing two separate modular cords to be connected to form an extension. Coupler is only 1" long, color is Black and UL listed.



.57" W x 1." L



No. 75-725

CAT5e In - Line Coupler

RJ45 (8 conductor) jack on both ends. Allow two separate CAT5e patch cords to form an extension. It is fully compliant with CAT5e specifications, color is white.



No. 72-5588